

101

MANOHAR BAGH FARMS

BY INVESTORS STOP INFRA





ABOUT INVESTORS STOP INFRA

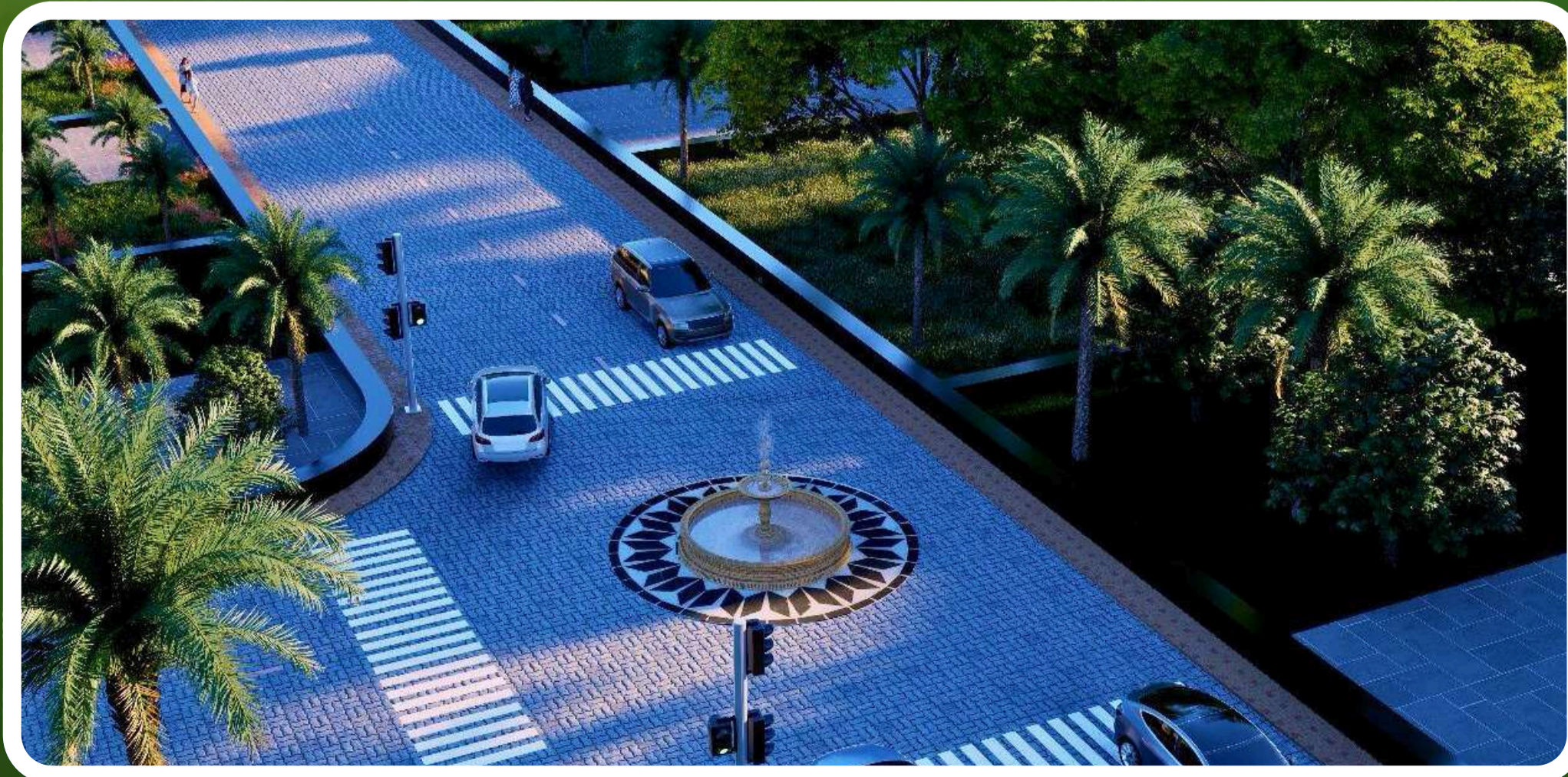
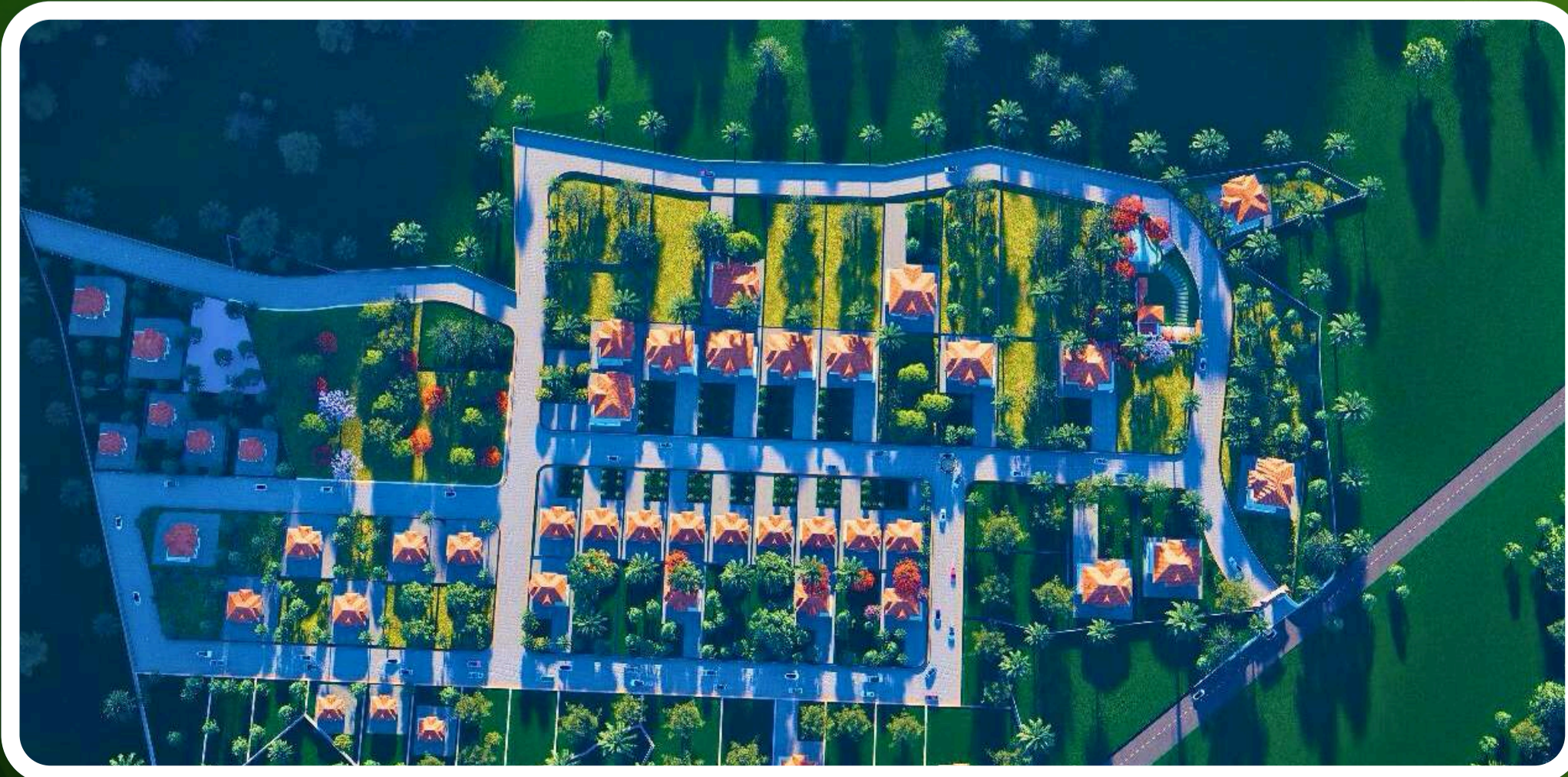
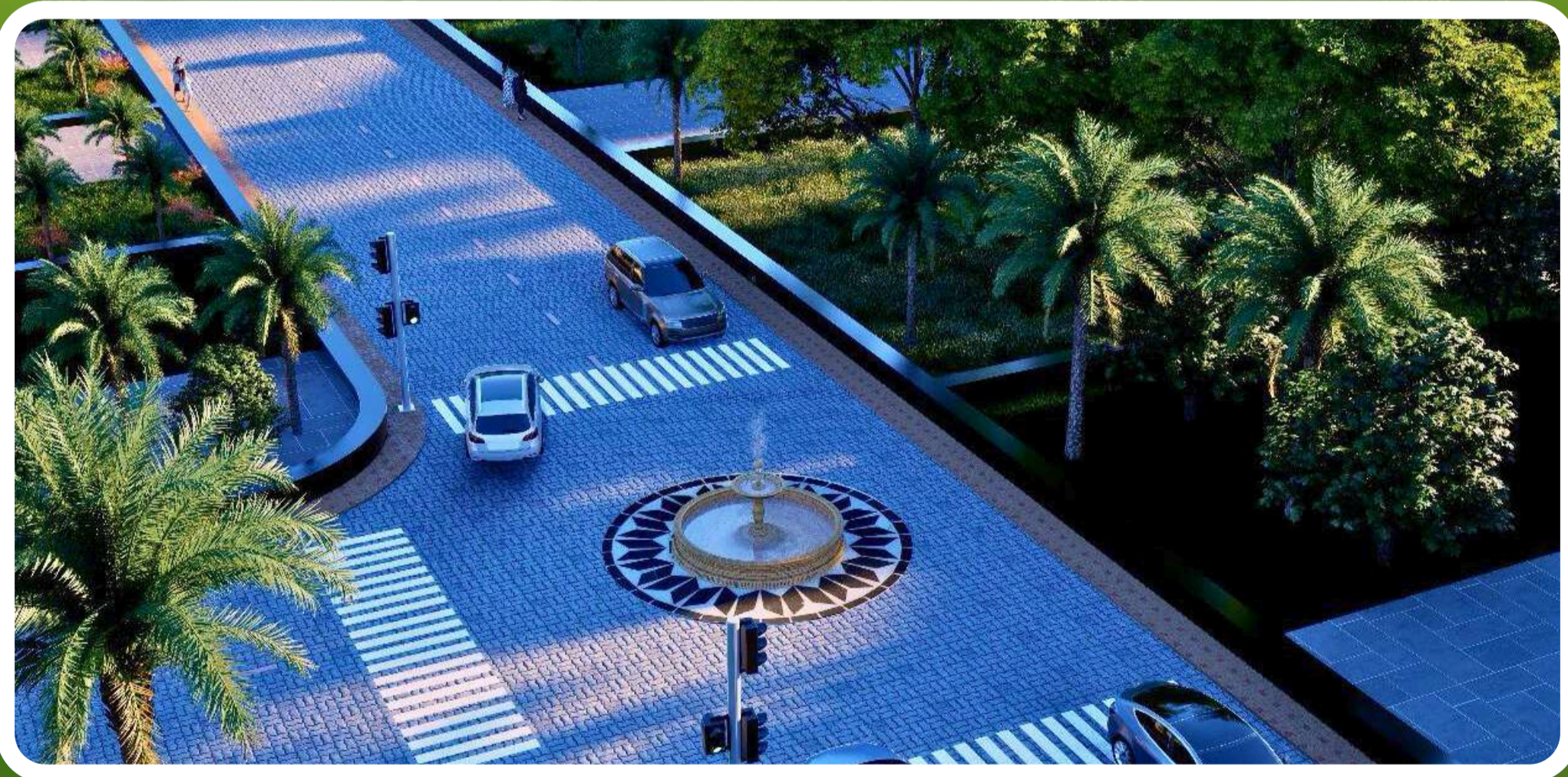
At Investors Stop Infra, we specialize in building real estate opportunities that deliver high value, strong returns, and future-ready growth. Each project is strategically selected and meticulously developed to ensure investors benefit from premium locations, rising demand, and long-term appreciation.

With a commitment to transparency and professionalism, we aim to make land ownership simple, secure, and rewarding. Our mission is to help investors grow their wealth through smart, sustainable, and well-planned projects like **Manohar Bagh Farms**.





SITE GALLERY





LOCATION & CONNECTIVITY

A Prime Location with Powerful Growth Potential

Manohar Bagh enjoys a strategic location, placing you at the center of growth, convenience, and lifestyle development. Its proximity to elite resorts, premier institutions, and upcoming infrastructure makes it one of the most promising destinations for farmhouse investment.

LOCATION ADVANTAGES:



Surrounded by
luxury 5-star resorts



Nims Medical
University



Close to an International
Cricket Stadium



Directly connected
to the Jaipur-Delhi
Highway



Fast-developing
tourist & hospitality
zone

Manohar Bagh brings you close to vibrant opportunities while keeping you cocooned in nature's serenity.



CONNECTIVITY MAP

Perfectly Connected, Peacefully Secluded

Stay connected to major cities, business hubs, airports, and tourist spots—all while living in your private green haven.

KEY DISTANCES:



Leela Palace 30 Min.
Distance



Taj Jaipur 30 Min.
Distance



Fairmont 5 star
hotel 30 min.
Distance



Hawa Mahal are
40 min. Distance



KEY DISTANCES



Bhangarh Fort 45 min.
Distance



Sariska Tiger
Reserve 45 min.
Distance



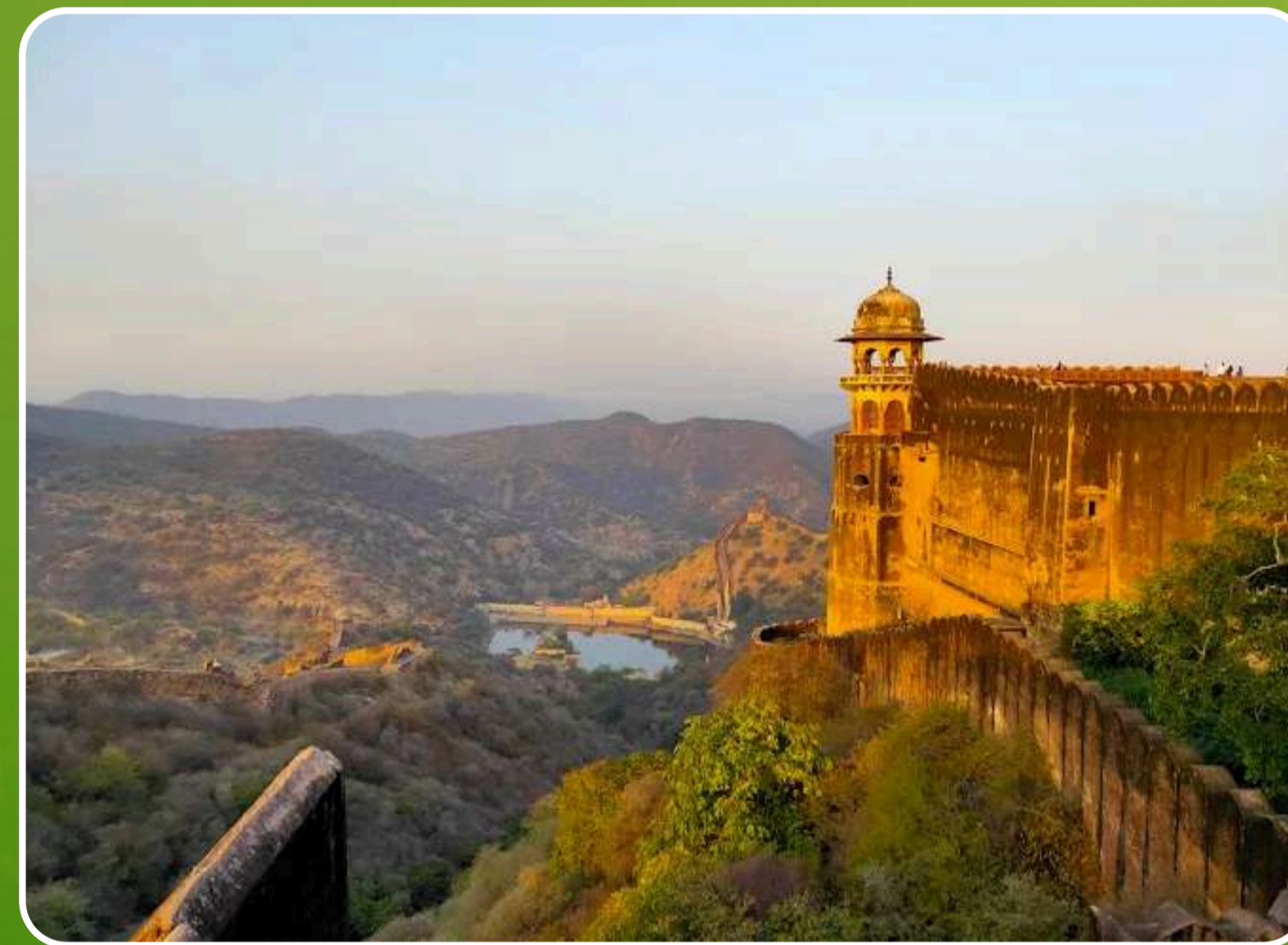
Khatu shyam ji
temple 1 hour
Distance



TOURIST PALACE



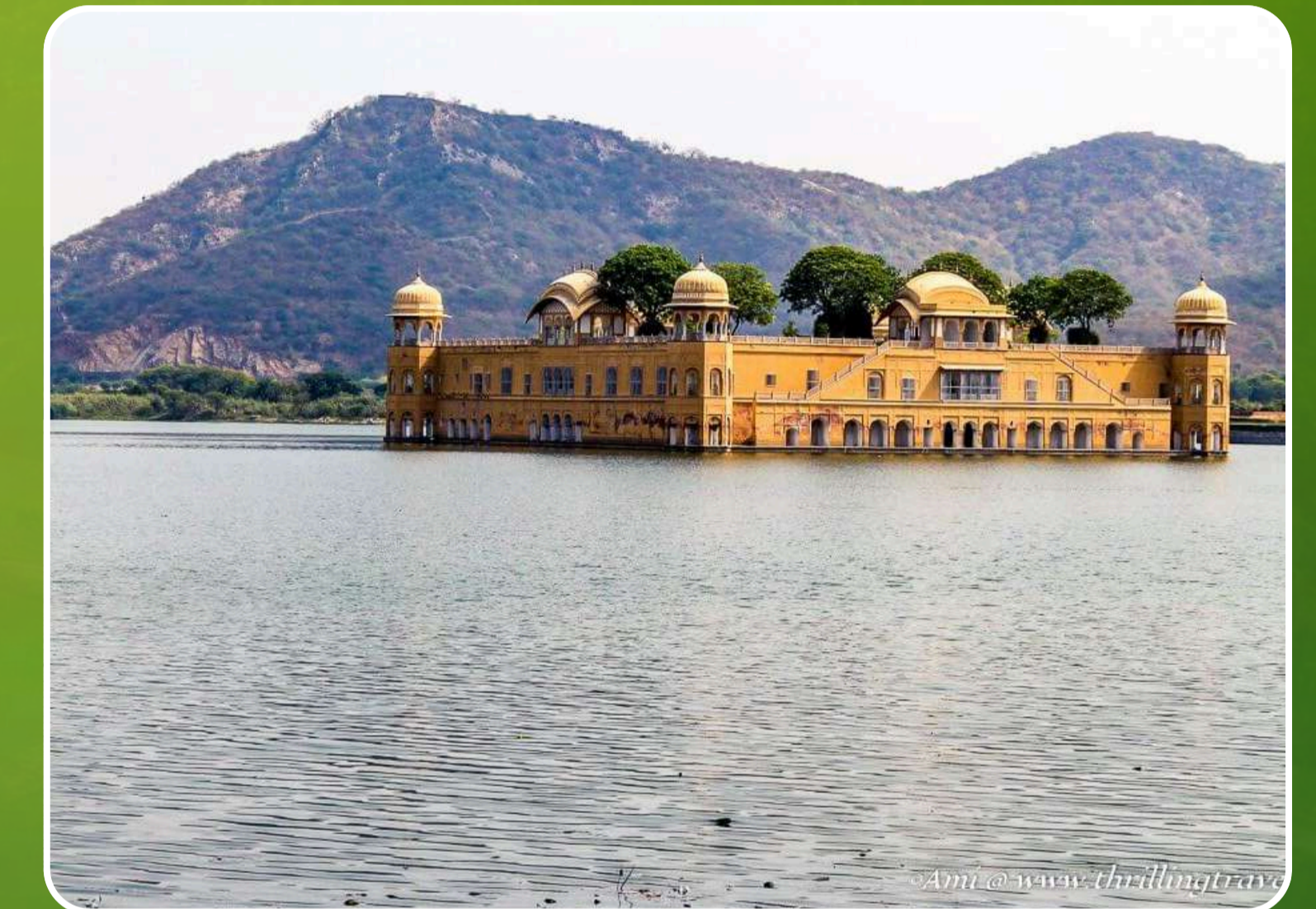
Amber Fort



Jaigarh Fort



Nahargarh Fort



Jal Mahal

Whether for weekend getaways, rental income stays, or a peaceful residence, Manohar Bagh Farms offers unmatched accessibility.



LETS UNWIND

Manohar Bagh Farms: Your Holiday Home Near Jaipur

Manohar Bagh Farms offers you the perfect holiday-home lifestyle—an elegant space where you can unwind, celebrate, and create moments with your friends and family.





OTHER SERVICES

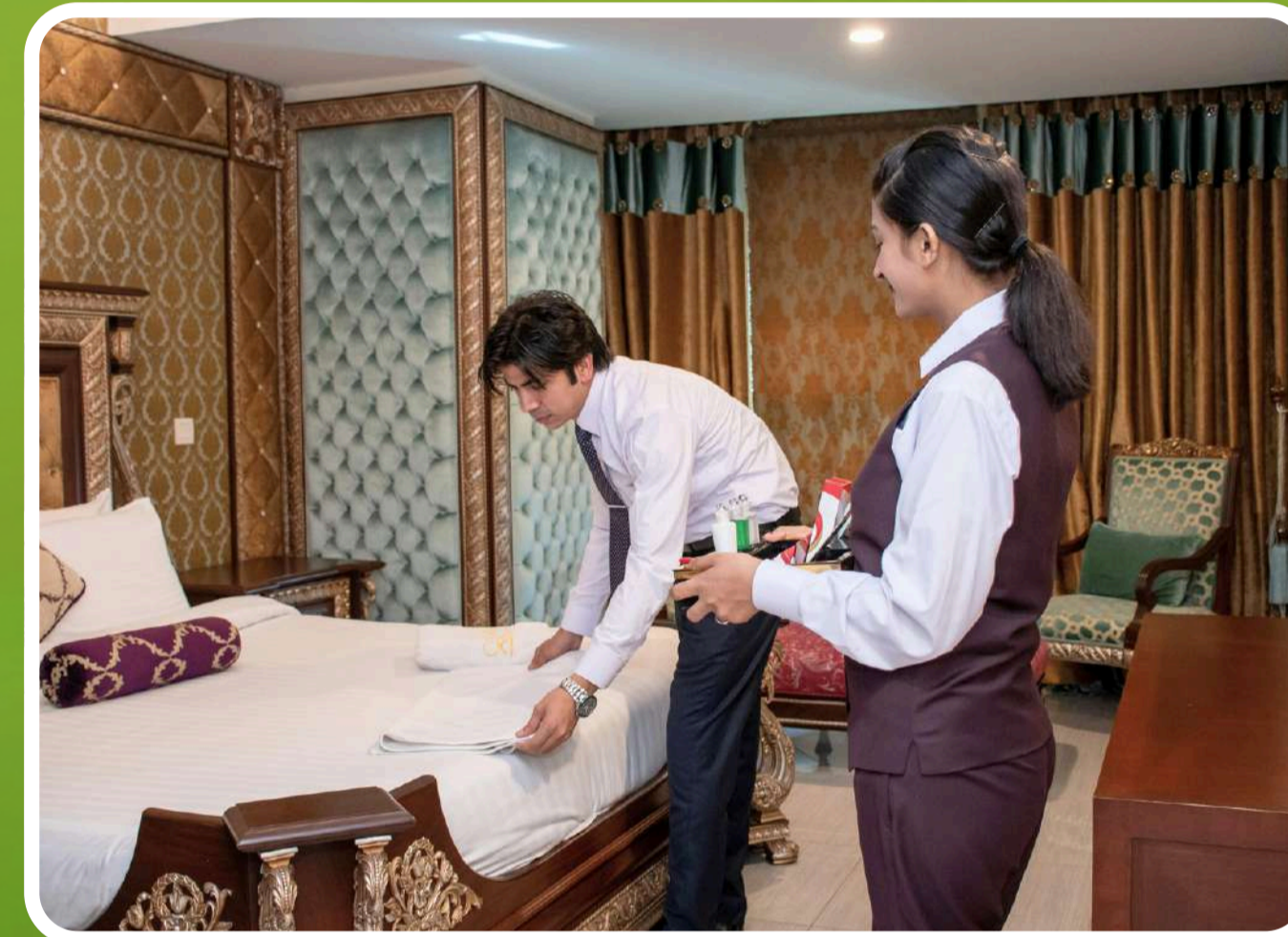
The image highlights the Other Services and Amenities provided at the community.



**COMMON AREA
CLEANING**



CHEF ON CALL
(On Charges Basis)



**HOUSEKEEPING
STAFF**



**GARDEN
MAINTENANCE**



**FRESH COW
MILK**



**ORGANIC
FARMING**



AMENITIES AVAILABLE



SECURITY



**IN HOUSE
RESTAURANT**



**SPA & THERAPY
CENTER**



WIDE ROADS



CLUB HOUSE



CLUB HOUSE & SWIMMING POOL

A High-Value Lifestyle Asset

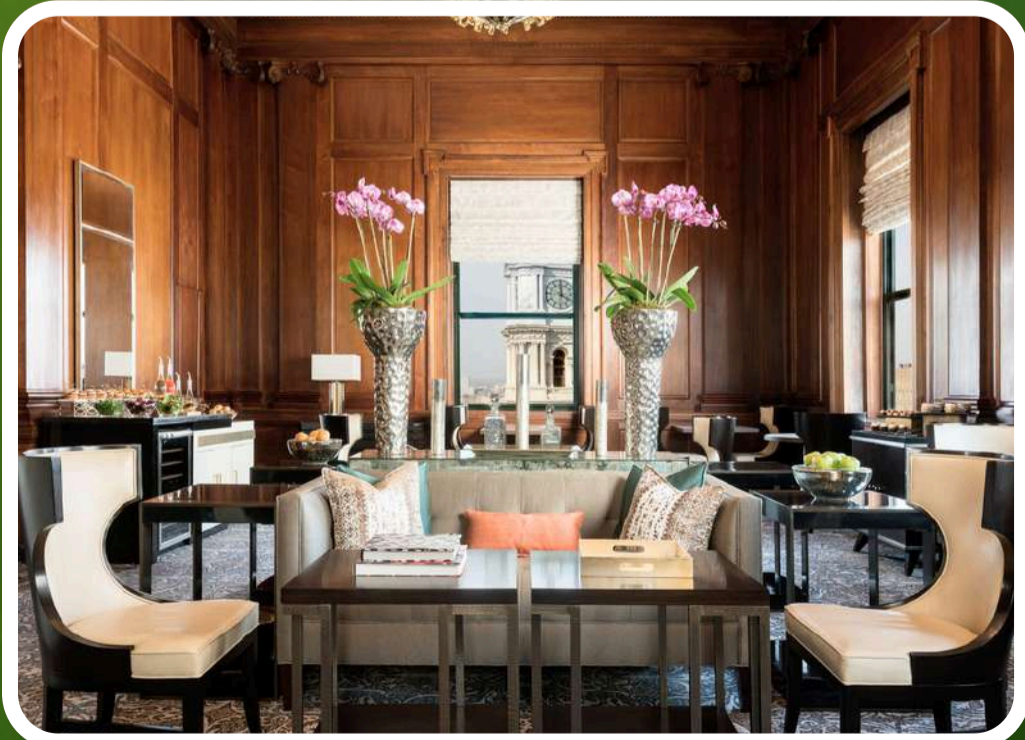
The Club House at Manohar Bagh Farms stands as a key value enhancer for investors, offering premium resort-style amenities that elevate both resident experience and rental potential.



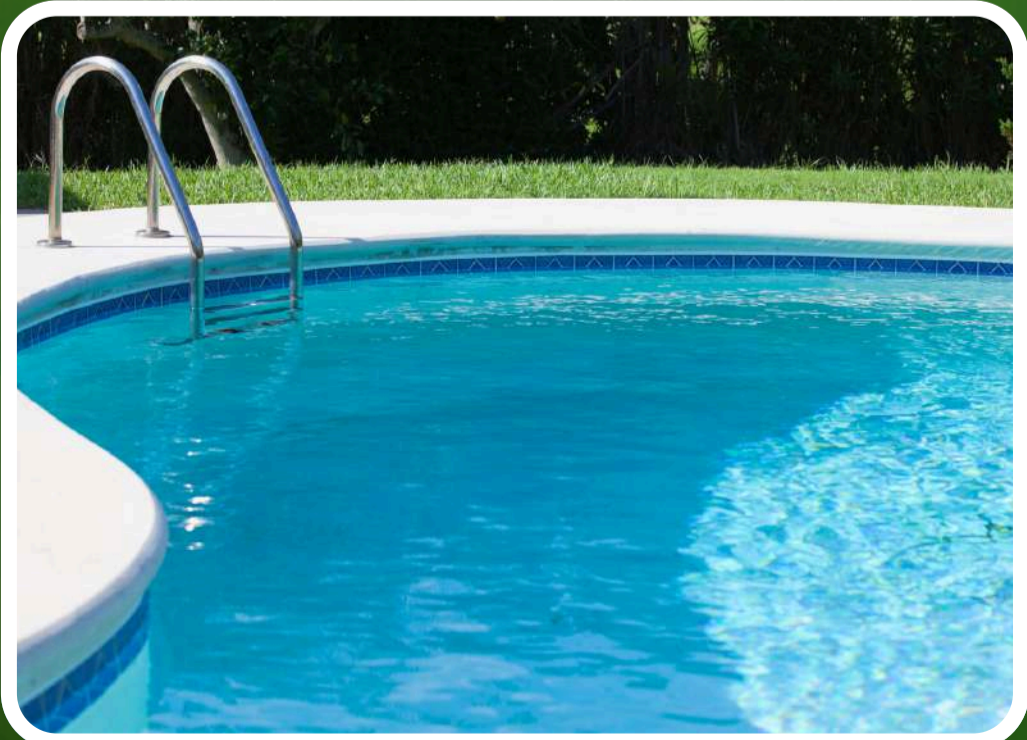
CYCLING TRACK



YOGA
Meditation Zone



CLUB LOUNGE



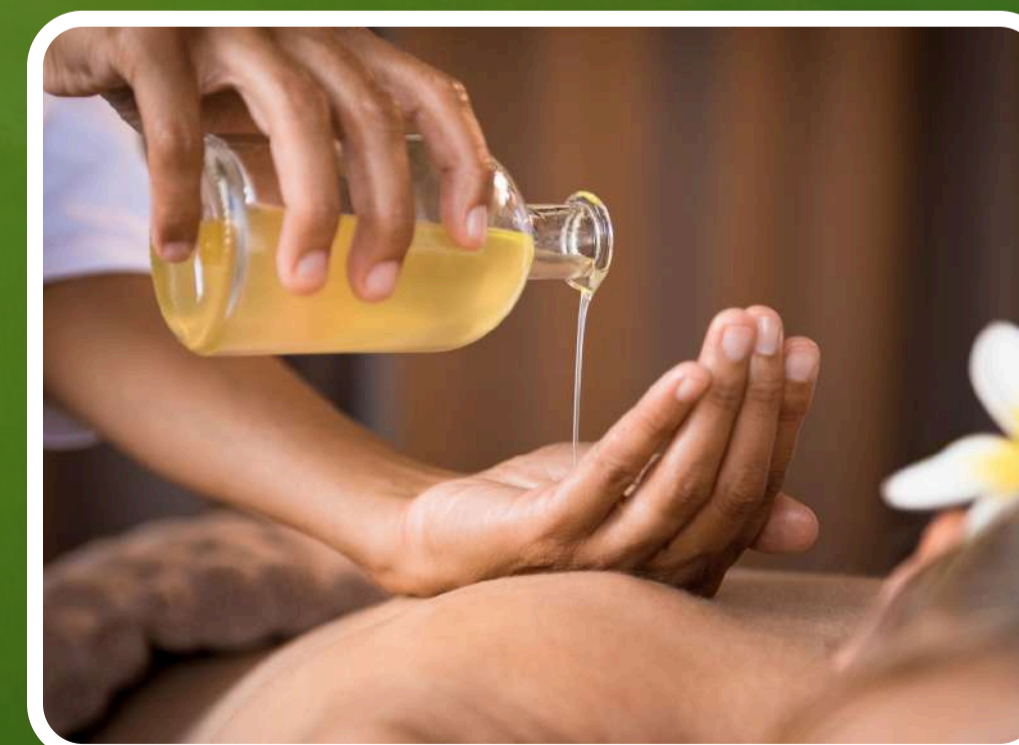
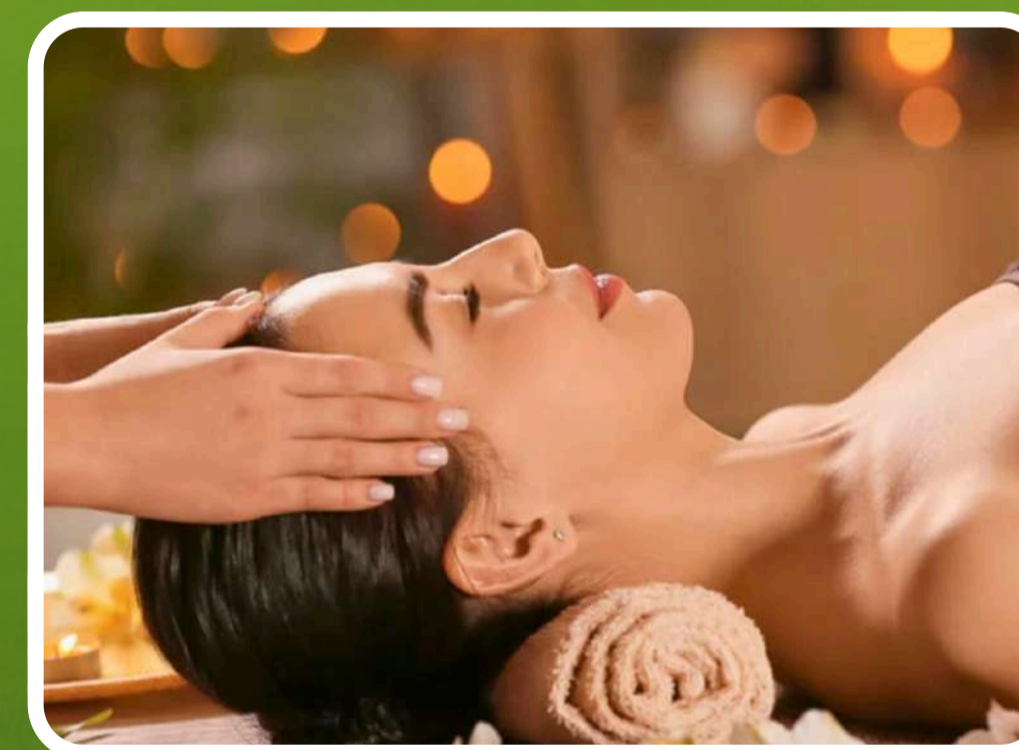
SWIMMING POOL



HEALTH CLUB

Spa & Naturopathy Center

The Health Club at Manohar Bagh Farms blends natural healing with luxury wellness, offering a serene environment to relax, recharge, and rebalance.

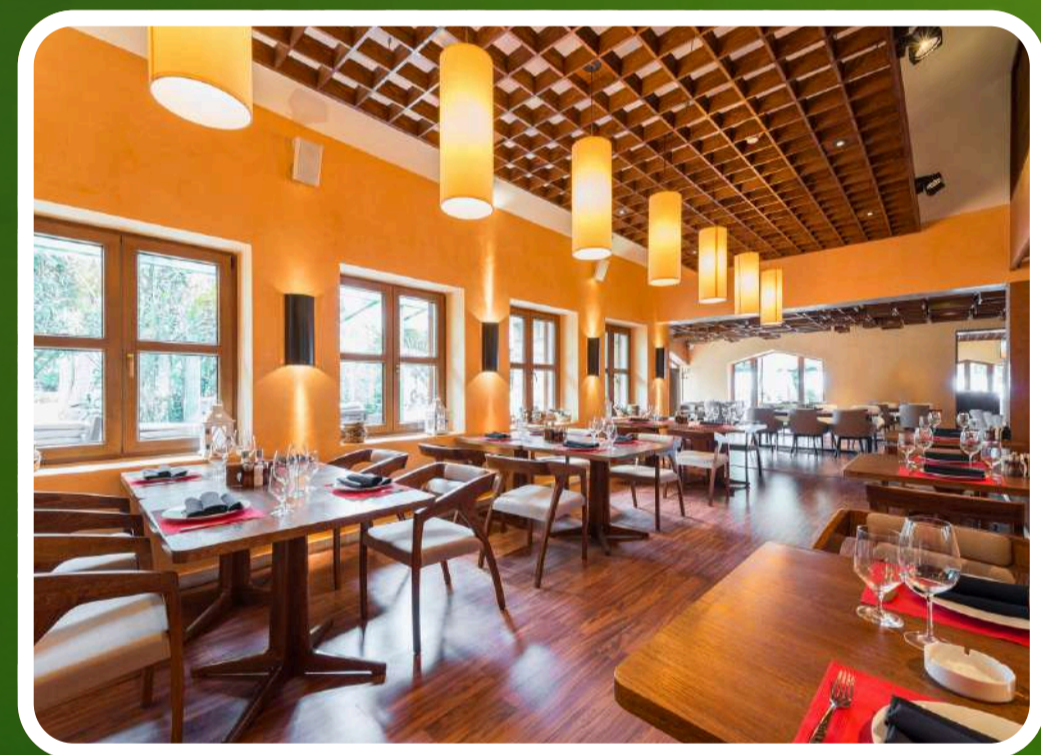




IN-HOUSE RESTAURANT

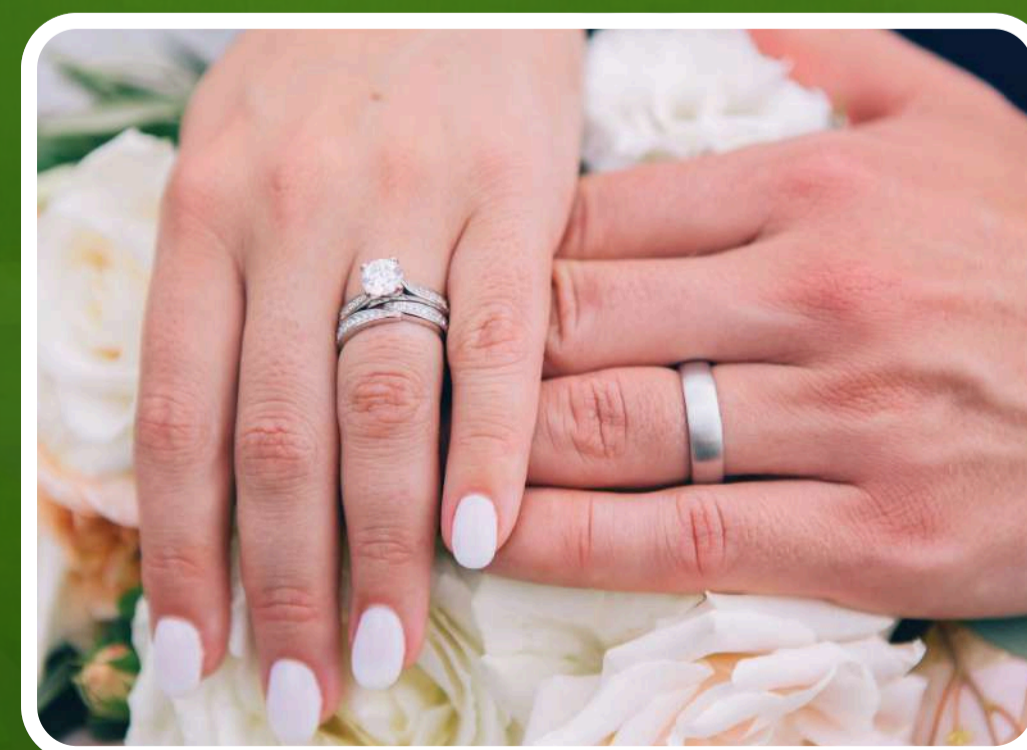
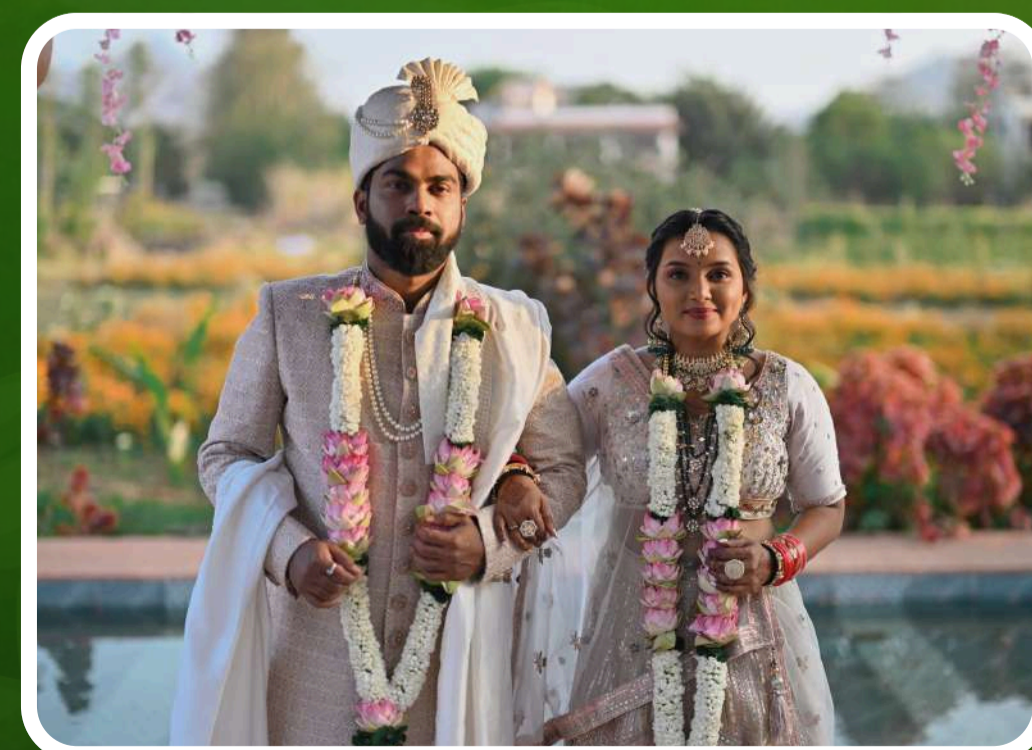
Elegant Dining Experience

The In-House Restaurant at Manohar Bagh Farms offers a refined and memorable dining experience, where guests enjoy.



- Destination weddings

- Corporate events & celebrations





INVESTMENT OPPORTUNITY

— Farm Stay Potential —

A Destination Designed for Growth & Passive Income

With the rising demand for boutique stays, nature retreats, and Airbnb getaways, Manohar Bagh is a high-return investment opportunity.

High Demand

Flexible Development

Eco-Friendly Lifestyle

Future Appreciation



Imagine owning a luxurious farmhouse that earns passive income while offering guests an unforgettable nature retreat—**Manohar Bagh Farms makes it possible.**



LOCATION MAP

